

# JURY REPORT



## 2018 MISSISSAUGA URBAN DESIGN AWARDS

**DESIGN THAT MOVES US**



**2018 MISSISSAUGA  
URBAN DESIGN AWARDS**

# **2018 MISSISSAUGA URBAN DESIGN AWARDS**

## **POSTER DESIGN**



**2018 MISSISSAUGA  
URBAN DESIGN AWARDS**

**DESIGN THAT MOVES US**



**MISSISSAUGA**

**Region of Peel**  
*Working for you.*

**Sheridan** | **Get Creative**

Poster Design by "Breanne McCallum"



Office of the Mayor



Dear Friends,

On behalf of the City of Mississauga and Members of Council, I would like to extend my very best wishes and congratulations to the nominees and winners of the 2018 Mississauga Urban Design Awards. Everyone involved has played an important role in our efforts to build a complete city – a place where residents can work, raise a family and enjoy an unrivaled quality of life.

We take pride in ensuring that as we work to build a world-class city that urban design is not only considered but incorporated from the initial planning phases all the way through development. Urban planning gives us the opportunity to identify opportunities and ensure that our City manages future growth in a sustainable manner.

This year's theme is quite fitting "Design That Moves Us." Mississauga is a city in transformation. We have grown from a collection of villages to Ontario's third largest city, and the sixth largest in Canada. We are now entering a new stage as we focus on building up, not out, and our downtown core intensifies and urbanizes. To prepare for this growth, we are working to build a regionally connected transit system, where people can move quickly and efficiently across our city, connecting to destinations that underpin an environmentally responsible, inclusive, vibrant and successful city.

I wish to further recognize the jury members who volunteered their time and professional expertise to help us identify and recognize the best and the brightest. There is an extensive judging criterion that is taken into consideration that includes environmental stewardship, innovation and the health and well-being of residents, among other important city-building factors.

Thank you to the architects, planners, engineers, urban design professionals and committed city-builders who submitted their work for this year's competition. Once again, congratulations to all the award winners. You have rightly earned this prestigious recognition. Your brilliance is an inspiration to us all.

Warmest Regards,

Bonnie Crombie, MBA, ICD.D

# AWARDS AND JUDGING CRITERIA

## AWARDS

### Award of Excellence

This award is presented to projects that exemplify, as much as possible, the judging criteria and the City's design principles.

### Award of Merit

This award is presented to projects that demonstrate excellence in one or more of the judging criteria and the City's design principles.

### Award of 'Healthy by Design'

This award is presented to projects that exemplify, as much as possible, the six elements from the Healthy Development Index: density, service proximity, land use mix, street connectivity, streetscape characteristics and parking.

*Note:* The number of awards issued is at the discretion of the Jury

## JUDGING CRITERIA

### Significance: Citywide Scale

Contribution to the City's design objectives as related to city image, visual identity, vistas, skyline, streetscapes, recognition of sites and location opportunities.

### Significance: Community Scale

Contribution to the quality of the environment within a community which demonstrates a regard for the context of the locale, enhancing a sense of place, personal health and safety, or reinforcing a unique history.

### Living Green

Demonstrates an integrated approach to design which supports environmental and sustainable site and building practices, while providing benefits to the community and supporting active modes of transportation, walkability and green infrastructure.

### Innovation

The degree of creative response to program requirements and site constraints, considering sustainable best practices, including LEED and Low Impact Development, with the ability to influence trends.

### Context

The relationship or blending of built form and spaces with existing and planned development, and respect for and enhancement of the area's character.

### Execution

The quality of construction materials and the interpretation of design into reality. Supports Our Future Mississauga Strategic Plan. Supports the City's Strategic Pillars for Change:

- *Move* - Developing a transit-oriented city
- *Belong* - Ensuring youth, older adults and new immigrants thrive, ensure accessibility
- *Connect* - Completing our neighbourhoods
- *Prosper* - Cultivating creative and innovative businesses
- *Green* - Sustainability and environmental considerations

### 'Healthy by Design'

Contributes to the creation of walkable, sustainable and complete communities through demonstrating inter-related healthy development elements: density, service proximity, land use mix, street connectivity, streetscape characteristics and parking.

## THE JURY



**John Kovac**  
Councillor, Ward 4  
City of Mississauga

John Kovac represents Ward 4 in the City of Mississauga, having been elected as City and Regional Councillor in 2015's municipal by-election. He is the current Chair of the City's Arts, Culture and Heritage Ad-Hoc Committee, Vice-Chair of the City's Public Vehicle Advisory Committee and a member of a multitude of other City boards, committees and working groups, including the Planning and Development Committee and the HLRT Ad-Hoc Council Working Group.

Born and raised in Mississauga, Councillor Kovac grew up in the Rathwood neighbourhood which stretches through Wards 3 and 4. He has an Honours Bachelor of Arts Degree, majoring in History and English Literature from the University of Toronto, St. Michael's College.

Prior to serving as the representative of Ward 4, Councillor Kovac worked for a local area Member of Parliament and also served as political aide to a Member of Provincial Parliament/Cabinet Minister. Recognizing the unique potential Mississauga has as Canada's sixth largest city, Councillor Kovac remains excited by the task of helping oversee the City's transition to a high growth, arts friendly and transit-oriented destination, particularly in the City's Downtown Core.



**Paul Sharma, BSc., RDH, MSc.**  
Director, Chronic Disease and Injury Prevention Division  
Region of Peel

Paul Sharma is the Director of the Chronic Disease and Injury Prevention division for the Region of Peel Public Health. Before the Region of Peel, Paul was the Manager of the Oral Health programs at the Middlesex-London Health Unit and previously Manager in the Department of Oral Health for Hastings and Prince Edward Counties Health Unit. Paul is also appointed as an Adjunct Professor at the Faculty of Dentistry, University of Toronto.

Paul currently sits as president on the Executive Committee of the Ontario Association of Public Health Dentistry (OAPHD). As well, Paul sits on the Association of Local Public Health Agencies (alPHa) Board of Directors representing OAPHD. Paul's first position in health care was working as a registered dental hygienist in Toronto primarily providing services to individuals living with HIV. Paul has also been involved in dental hygiene education in a teaching and management capacity. Paul has completed his Masters of Science in Dental Public Health from King's College, University of London, in London, England.

## THE JURY



**Christine Abe**, BLA, OALA, CSLA, ASLA  
Principal  
The MBTW Group

Christine Abe is an award-winning landscape architect who is well-regarded for her ability to explore design from a large-scale perspective to the finer details. A graduate of the University of Guelph with a Bachelor of Landscape Architecture, Christine has gained extensive experience in master planning, mixed-use and institutional developments, condominiums, streetscapes, urban parks and waterfronts. Christine's service and expertise has led to her longstanding role as a Principal at The MBTW Group, where she leads the Urban Landscape Team and specializes in projects with a focus on high density, urban, mixed-use developments, civic and institutional landscapes, and the urban public realm. Christine has been instrumental in the development and implementation of innovative projects involving tall buildings, intensive and extensive green roofs, urban streetscapes and 'on-slab' landscape construction. Christine's portfolio includes award-winning projects such as the University of Toronto at Mississauga – Hazel McCallion Learning Centre, Canada's National Ballet School Project Grand Jeté - Phases 1 and 2, Hullmark Centre, BMW Canada Headquarters, and the Cornell Community Centre and Library. She is currently leading the extensive on-slab redesign and redevelopment of College Park in Toronto.

Christine is an active member of the landscape architecture community in Toronto and volunteers her time in academic and professional organization activities. She has participated as a visiting lecturer and visiting critic at both Ryerson University and the University of Guelph. Christine is a current panelist on the Mississauga Urban Design Advisory Panel. Christine has gained valuable experience as a juror in various design award competitions across the province, including acting previously as a juror for the Toronto Urban Design Awards. She will bring her expertise to critique entries based on landscape architectural and urban design excellence.



**David Dow**, O.A.A., MRAIC, AAA  
Principal  
Diamond Schmitt Architects

David Dow joined Diamond Schmitt Architects in 1999 and has been a Principal since 2003. David graduated with a Bachelor of Science in Architecture from the University of Dundee, Scotland, and a Bachelor of Architecture from the University of Waterloo, where he received the graduating class award for design excellence. Throughout his career, he has brought considerable design and management expertise to architectural projects of varying complexity and size. Mr. Dow is a member of the Ontario Association of Architects, Alberta Association of Architects and the Royal Architectural Institute of Canada.

During his 34 years of practice, he has managed a wide range of recreational, institutional, health care, commercial and residential projects, including the Bahen Centre for Information Technology at the University of Toronto, the Peter Gilgan Centre for Research and Learning at Sick Kids Hospital in Toronto, and the 17 storey Globe and Mail Centre located in Toronto's Old Town.

David has presented at conferences on the benefits of the Integrated Project Delivery process including the Northwest Territories Association of Architects Integrated Project Delivery Workshop in Yellowknife, NT, and the Building Envelope Forum and the Construct Canada Conference in Toronto, ON.

## THE JURY



**Ken Snell**, B.Arch., O.A.A. (retired)  
Professor, School of Architectural Technology  
Sheridan College

Ken is a retired architect, artist, writer, educator and a long-time resident of Mississauga. After completing his bachelor's degree in architecture at the University of Waterloo in 1980 he practiced architecture in the private sector with various architectural firms in the GTA for 10 years before joining Sheridan College in 1990 as a professor of Architectural Technology. In his early professional career, he was the architectural representative on site for the construction of Pickering City Hall, Scarborough YMCA and the Koffler Institute, and was on the design teams for the Baycrest and Scarborough Centenary Hospitals.

As part of a team with the Barrier-Free Design Centre, Ken co-authored *The Sourcebook: Architectural Guidelines for Barrier-Free Design* and embarked on a province-wide tour educating architects about designing residences for disabled clients.

More recently he was the author of "Juxt-Suppose: A Graphic Definition of the Creative Process" and "Towards a New Paradigm in Architectural Education" both are published in the online repository SOURCE: Sheridan Scholarly Output, Research, and Creative Excellence. A series of his architectural poems, drawings and photographs were included in the recently published inaugural printed portfolio of Sheridan's School of Architectural Technician/Technology. This volume celebrates achievements of Sheridan's architectural faculty and students.

Ken looks forward to contributing his many years of experience evaluating and adjudicating to the urban design awards selection committee.



**Andrew Whittemore**, M.U.R.P.  
Commissioner, Planning and Building  
City of Mississauga

Andrew currently holds the position of Commissioner, Planning and Building with the City of Mississauga, Ontario. He can be described as a generalist planner and a visionary with a passion for city building.

Andrew began his professional planning career in Halifax, Nova Scotia with a focus on development planning. This provided him a good understanding of implementation, and a sound foundation for policy planning. One of Andrew's professional highlights was his appointment to the City of Halifax's Regional Plan project. This was the first of its kind in Nova Scotia and considered ground breaking. Andrew was awarded the Chief Administrative Officer's award for leadership for his work on the Regional Planning project.

Andrew joined the City of Mississauga in 2012; excited by the tremendous city building opportunity Mississauga provided. As Director of Policy Planning, which was later amalgamated with the Strategic Community Initiatives Division, Andrew led many major initiatives including: Mississauga's first Housing Strategy: Making Room for the Middle, Community Engagement Strategy, Dundas Connects, Ninth Line Lands, and waterfront plans.

Andrew holds a Masters in Urban and Rural Planning and a Bachelor of Science. In 2015, Andrew was honoured to be selected to participate in the Governor General of Canada Leadership Conference where he travelled across Canada's Northwest Territories.

**JURY DAY**  
June 15, 2018





# AWARD OF EXCELLENCE AWARD OF 'HEALTHY BY DESIGN'

## MEADOWVALE COMMUNITY CENTRE AND LIBRARY

**Location:** 6655 Glen Erin Drive, Ward 9  
**Owner:** City of Mississauga  
**Consultants:** Perkins+Will  
Fleisher Ridout Partnership Inc.

### Project Description

The Meadowvale Community Centre and Library is located in the heart of Meadowvale neighbourhood in northwest Mississauga. Meadowvale neighbourhood was originally conceived in the mid 1970's as a large residential subdivision with homes, schools and a community centre organised around a park and Lake Aquitaine, a manmade lake. Since then, the neighbourhood has grown with the park and the lake evolving into a rich, natural and social ecosystem. By 2014, the original Community Centre which was commissioned in 1982 was no longer adequate to serve the needs of the community. The redevelopment of the Community Centre with a new library was conceived in response to the needs of a growing population, as well as to meet new accessibility and sustainability standards.

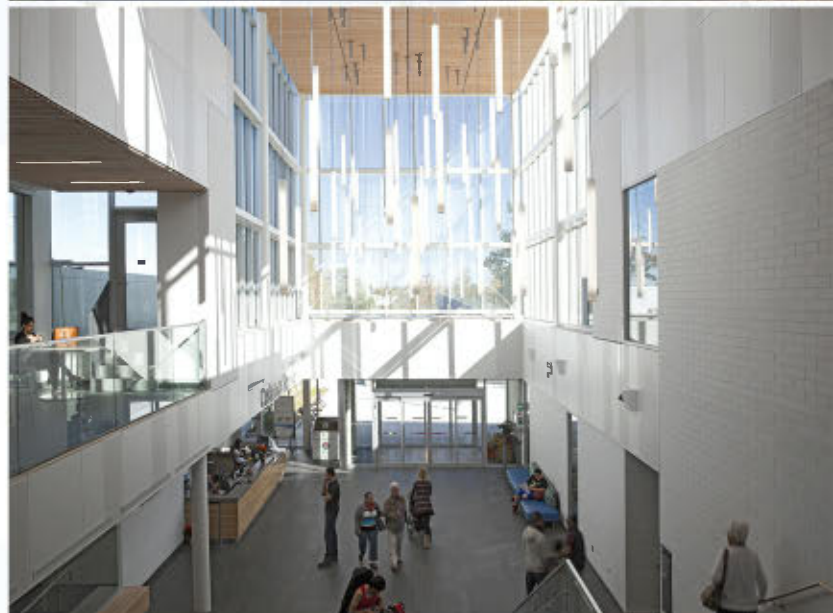
The layout of this facility is arranged as a series of terraces bisected by a light filled central hall that guides visitors and users through the building from Glen Erin Drive to Lake Aquitaine Park beyond. Graceful bands of glazing provide views to all the programs housed within the building, encouraging interaction, participation and accessibility. Program elements include a branch library, aquatics, fitness, gymnasium and multipurpose program rooms serving teens, preschool children and seniors.

### Jury Comments

Meadowvale Community Centre and Library is a vibrant, energy efficient facility located adjacent to Lake Aquitaine. In addition to its stormwater management function, beautiful Lake Aquitaine provides great views for the community centre. The light-filled interior spaces of the community centre, including an elegant central staircase that connects the main entrance to the lakefront, capture and maximizes the great views of the lake.

The community centre has a variety of outdoor and indoor amenities and gathering spaces that are well used by and suitable for multiple generations of people from children to older adults. It has excellent visual and physical connectivity to Lake Aquitaine and the surrounding trail system. This facility adds a very important social contribution to the urban fabric, and it serves as an accessible gateway for wellness, recreation, and literacy for the entire community.

Meadowvale Community Centre and Library demonstrates excellence in each of the judging criteria. It has earned an Award of Excellence and an Award of 'Healthy by Design'.



# AWARD OF MERIT

For Significance at a Citywide Scale, Living Green, Innovation and Execution

# AWARD OF 'HEALTHY BY DESIGN'

## MISSISSAUGA TRANSITWAY MIWAY STATIONS



**Location:** Eight Stations: Cawthra, Central Parkway, Dixie, Etobicoke Creek, Orbitor, Spectrum, Tahoe and Tomken  
**Owner:** City of Mississauga  
**Consultants:** IBI Group Architects  
 Urban Strategies  
 WSP/MMM Group

### Project Description

The Mississauga Transitway is a two lane, 18 kilometre Bus Rapid Transit (BRT) system that serves Mississauga and integrates into the key transit corridors of the Greater Toronto Area (GTA). The project includes 11 new stations: eight operated by MiWay and three operated by GO Transit. Proposed links to the Transitway consist of express bus lanes on Hwy 407 at the west end of the route; express bus lanes on Hwy 427 at the east end; the rail link to Lester B. Pearson International Airport; and the Eglinton Avenue LRT; together they will serve as the foundation of an emerging regional transit network.

### Jury Comments

The Mississauga Transitway is an important element of the local and regional Public Transit Infrastructure. It marks the beginning of a bold initiative by the City to connect people to jobs and concentrate density around transit stations. Eleven transit stations are linked by a common language that is expressed in elements of the architectural design such as the roof forms, elements of the site and landscape design, the palette of exterior and interior finishes as well as the public art. The common language unites the transit stations and achieves a unique branding that has been thoughtfully knitted into the overall design while preserving the features that define and distinguish each station from the other stations.

The Mississauga Transitway has earned an Award of Merit for the following:

- Enhancing the City image with a strong common language, while maintaining a distinct identity for each station,
- Living Green by providing transit service that is accessible from trails, pedestrian walkway systems and local transit, and without dedicated parking lots,
- Its innovative approach to transit design within the constraints of each site, and
- Execution by supporting the City's Strategic Pillar for Change, 'Move' in contributing to the transformation of Mississauga into a transit-oriented city.

The Mississauga Transitway has earned an Award of 'Healthy by Design' for its connectivity to active transportation systems, the impetus that it provides for the development, and the concentration of density in Transit Station Areas.

# AWARD OF MERIT

## For Community Scale, Innovation, and Context

### JAYCEE PARK

**Location:** 1520 Gullelen Drive, Ward 3  
**Owner:** City of Mississauga  
**Consultants:** Baker Turner Inc.  
 Earthscape

### Project Description

Jaycee Park was completed by June 30, 2017, as required by the Canada 150 Community Infrastructure Program (CIP 150). This federal program, Intake 2, celebrated Canada’s 150th anniversary by providing funding to municipalities to much needed renovations and improvements to aging infrastructure.

The site has been designed and constructed as an inclusive sensory play environment for children and caregivers of all abilities, incorporating play elements that are reminiscent of Mississauga’s skyline. The playground is designed to stimulate multiple human sensory organs and experiences including touch, hearing, sight, smell and neurological functions. The musical instrument melody xylophone is designed to stimulate hearing, brain development, and creativity. The in-ground trampoline, a first in the City of Mississauga, offers a unique at-grade play element. The site also provides physical stimulations through the wheelchair accessible ramps and adaptive swings to allow children of different abilities on to the playground equipment. Extensive use of poured-in-place rubber surfacing on the site ensures easy access for users with mobility devices. Its innovative application on sloping surfaces means children can safely run or wheel up and down small hills.

### Jury Comments

Jaycee Park is a creative, visually stimulating and exciting neighbourhood park that is well integrated and connected to the surrounding community. Most of the patrons walk to the park, which is very visible within the community. It creates an appropriate environment for social connections and interaction. In the words of some of the Jury members, “I thought it was part of the streetscape”, “there are things in this park that I have never seen before”, “It pops with life and excitement, and if I were a kid, I would want to spend each and every day here”. Although the park surface is accessible, some of the play structures and play equipment could be developed to be more accessible to physically challenged children, including children in wheelchairs.

Jaycee Park earns an Award of Merit for the following:

- Context and Significance on a Community Scale, demonstrated by the way in which it fits appropriately, yet visibly within its context, is well connected and integrated into the surrounding community, and reinforces the identity of the neighbourhood in which it is located, and
- Innovation demonstrated by the creative composition of visually stimulating and engaging features that give it a high fun factor and make it a fun place for children and adults.





## AWARD OF MERIT For Community and District Scale

### PAUL COFFEY PARK

**Location:** 3430 Derry Road East, Ward 5  
**Owner:** City of Mississauga  
**Consultants:** Earthscape

#### Project Description

Paul Coffey park was completed by June 30, 2017, as required by the Canada 150 Community Infrastructure Program (CIP 150). This federal program, Intake 2, celebrated Canada’s 150th anniversary by providing funding to municipalities to much needed renovations and improvements to aging infrastructure.

The revitalization of Paul Coffey Park included refreshing the building exterior and the addition of a new barrier-free, accessible playground. Attention was also given to improve the park visibility, accessibility, and connectivity to the surrounding neighbourhood.

The landscape design incorporates functional design improvements to sidewalks, accessibility, and site furnishings, with a theme representing the spirit of Malton to make its streets more attractive and functional for the users. The playground structures were designed to be accessible and sustainable. All materials used are natural materials from Ontario. Each custom wood playground component was designed and built within 100 km of Malton.

#### Jury Comments

The submission for Paul Coffey Park is for a smaller area located within a larger existing District Park. The park improvement area that was submitted for consideration includes a revitalized existing arena, as well as a new playground with exceptional play value demonstrated by the many activities that children can engage in, and the skills that they develop as they engage in those activities. Although the park surface is accessible, some of the play structures and play equipment could be developed to be more accessible to physically challenged children, including children in wheelchairs.

Paul Coffey Park earns an Award of Merit for context and significance on a community/district scale. This is demonstrated by the way in which it fits appropriately within the context of the greater park. The new play area, renovated arena, public art mural and a revitalized streetscape all contribute to creating a transformative space consistent with the “My Malton” community vision project.

# PEOPLE'S CHOICE AWARD

## JAYCEE PARK

**Location:** 1520 Gulleden Drive, Ward 3  
**Owner:** City of Mississauga  
**Consultants:** Baker Turner Inc.  
 Earthscape

### Project Description

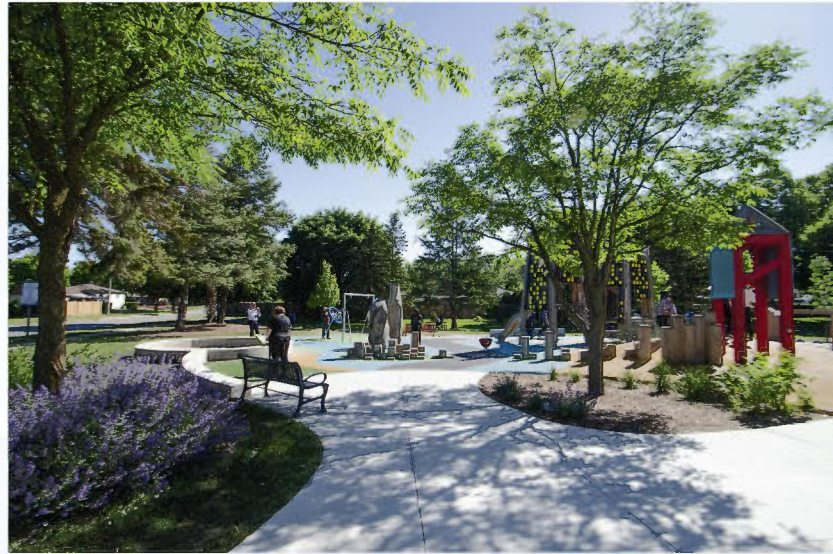
Jaycee Park was completed by June 30, 2017, as required by the Canada 150 Community Infrastructure Program (CIP 150). This federal program, Intake 2, celebrated Canada's 150th anniversary by providing funding to municipalities to much needed renovations and improvements to aging infrastructure.

The site has been designed and constructed as an inclusive sensory play environment for children and caregivers of all abilities, incorporating play elements that are reminiscent of Mississauga's skyline. The playground is designed to stimulate multiple human sensory organs and experiences including touch, hearing, sight, smell and neurological functions. The musical instrument melody xylophone is designed to stimulate hearing, brain development, and creativity. The in-ground trampoline, a first in the City of Mississauga, offers a unique at-grade play element. The site also provides physical stimulations through the wheelchair accessible ramps and adaptive swings to allow children of different abilities on to the playground equipment. Extensive use of poured-in-place rubber surfacing on the site ensures easy access for users with mobility devices. Its innovative application on sloping surfaces means children can safely run or wheel up and down small hills.

### About the People's Choice Award

The People's choice Award is part of the 2018 Mississauga Urban Design Awards program. It was launched on the City of Mississauga's Facebook page on June 15, 2018. Photographs and addresses of all the developments that were nominated for the 2018 Mississauga Urban Design Awards were published on the City's Facebook page. From June 15, 2018 until August 24, 2018, all legal residents of Mississauga were invited to 'Like' or 'Love' their favourite development. Over 11123 people showed their enthusiasm for urban design by voting. With a total of 4135 votes, the Jaycee Park emerged as the winning project.

Congratulations on winning the 2018 People's Choice Award !





## 2018 NOMINATIONS

(in alphabetical order)



**1** Cooksville Medical Arts Centre  
250 Dundas Street West, Ward 7



**2** Danville Park Viewing Platform  
6275 Danville Road, Ward 5



**3** Fallingbrook Community Park Washroom  
5135 Fallingbrook Drive, Ward 6



**4** Jaycee Park  
1520 Gulleden Drive, Ward 3



**5** Meadowvale Community Centre and Library  
6655 Glen Erin Drive, Ward 9



**8** PAT Supermarket  
315 & 333 Dundas Street East, Ward 7



**6** Mississauga Transitway MiWay Stations  
Eight Stations: Cawthra, Central Parkway, Dixie, Etobicoke Creek, Orbitor, Spectrum, Tahoe and Tomken



**7** Parklane Residence  
375 Lakeshore Road West, Ward 1



**9** Paul Coffey Park  
3430 Derry Road East, Ward 5



**10** Skyrise and Daniels Erin Mills  
2550 & 2560 Eglinton Ave West, Ward 8



**11** Small Arms Building  
1352 Lakeshore Road East, Ward 1



# MISSISSAUGA URBAN DESIGN AWARDS

1981 - 2018



1981



1982



1983



1984



1985



1986



1987



1988



1989



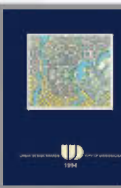
1990



1991



1993



1994



1995



1996



1997



1998



1999



2000



2001



2002



2003



2004



2005



2006



2007



2008



2009



2010



2011



2012



2013



2014



2016



2018

